

**THIS DOCUMENT IS INFORMATIONAL ONLY**  
**\*IT IS NOT A NOTICE OF WARRANTY AUTHORIZATION\***

**TO: ALL LAND MOBILE SERVICE CENTERS**  
**ATTENTION: SERVICE MANAGER**

**SUBJECT:** 988X and 989X PA Modification Kit, PN 250-9884-533

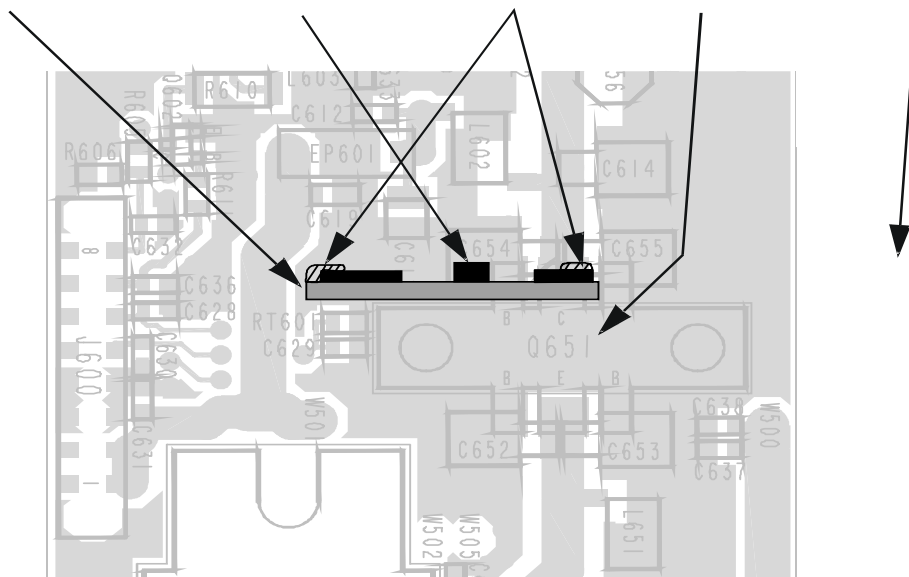
**Radio Models Affected:** High power (30W) 800 and 900 MHz radios with a date code before April 1, 1999 (139). The 30W high power model is identified by the "2" in the 5<sup>th</sup> character of the serial number. The date code is the 7<sup>th</sup> through the 9<sup>th</sup> characters. The 7<sup>th</sup> and 8<sup>th</sup> characters represent the week of the year and the 9<sup>th</sup> character represents the last digit of the year.

Example: Serial No. 98XX2A139A12345

**Background:** Some early high power model 988X and 989X radios would exhibit a loud "squeal" while transmitting. Analysis revealed that VSWR instability was the source of the problem. A small PC board assembly was added to the PA to improve VSWR stability.

**PA MODIFICATION INSTALLATION INSTRUCTIONS:**

Board Assembly      Component Side      Solder Here      Q651      Back of Transceiver



3. Position the PC board assembly from the kit in the location shown above. Make sure that the component side of the board is facing away from Q651.
4. Solder the tabs of the board to the collector and ground leads of Q651. The solder should wick up slightly on the board tabs.
5. Replace the shield cover. Transceiver retuning is not necessary after installing this board.

***For technical questions regarding this field advisory, call 1-800-328-3911, ext. 2.***